



**Lighter  
Stronger  
Better!**

**Strongest Built  
Australian Made  
Lifetime Warranty**

**PN:BI60SY**



# **Fitting Guide & Owners Manual**

**IVECO DAILY**

**C50 01/15on**

BIG TUBE WITH BUMPER LIGHTS  
VEHICLE FRONTAL PROTECTION SYSTEM (VFPS)  
FOR AIR BAG & ADR COMPLIANT VEHICLES



# Index

---

## **Pages 3-5**

ECB's Benefits

Product Care

## **Pages 6-7**

Stage 1 - Vehicle Testing and Preparation

Stage 2 - Ineer Guard Removal

Stage 3 to 5 - Bumper Removal

Stage 6 - Bumper Mount Removal

## **Pages 8-9**

Stage 7 to 8 - Install Mounting Brackets

Stage 9 - Align Mounting Brackets

Stage 10 to 12 - Trim Bumper

## **Pages 10-11**

Stage 13 - Light Wiring

Stage 14 - Refit bumper

Stage 15 - Install Towhook

Stage 16 - Bumper lights

Stage 17 - Indicator/ Park Lights

Stage 18 - Install and Wire Resistors

## **Pages 12-13**

Stage 19 to 20 - Clip Lock Trim

Stage 21 - Install Protection Bar

Stage 22 - Air Vent Direction

Stage 23 - Connect, Checks and Testing

## **Pages 14-15**

Final Checks & Fitting Kit

Finished Product

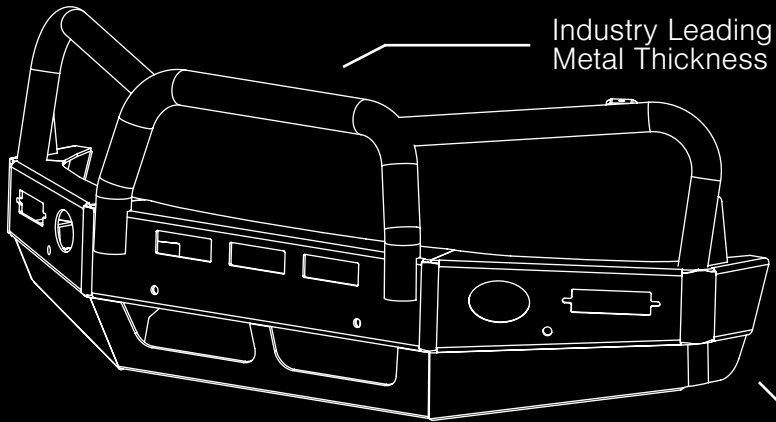
## **Pages 16-17**

Warranty Registration

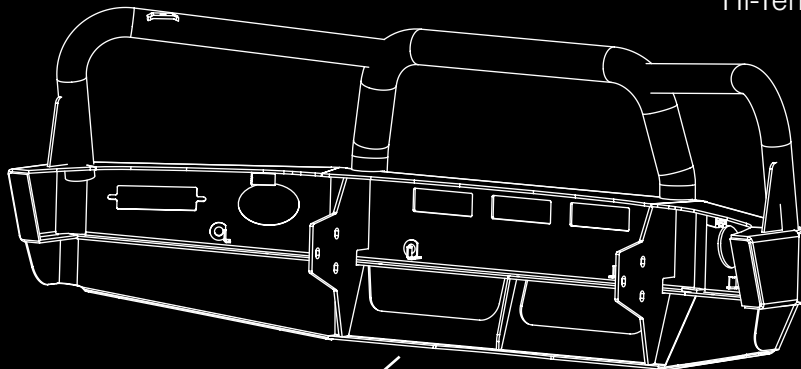
Notes

# The Features of ECB

---



Industry Leading  
Metal Thickness



6mm Thick  
Hi-Tensile Alloy

Unmatched  
Strength

Fully Welded  
Construction

# ECB's Benefits

---

## **Built to Perform - Not to a Price**

ECB are proud to claim that their channels are not jigsaw puzzles that are bolted together, or even multiple sections welded together. Where any welding is required, it is done to the highest standards by qualified welders, not machines.

## **Anti-Corrosive Nature of Alloy**

The composition of ECB's alloy has a very high resistance to corrosion. Rust not only looks unappealing but greatly reduces the strength of the metal. Rust can and will weaken the structural integrity of a steel bullbar effectively rendering it useless over time.

## **Australian Made**

Established in 1971, we utilise over 46 years of experience designing, engineering and building products in Australia to suit Australian conditions. We can ensure the best quality controls and help support the local economy and employ over 90 proud Australians.

## **Weight Saving Benefits**

An ECB alloy bullbar is typically half the weight of a steel bullbar. Unnecessary suspension upgrades are not required. The reduced weight also contributes to increased fuel economy and less wear and tear on tyres, suspension and braking components.

## **Welds That Work**

ECB uses only the strongest welds and welding techniques to ensure every product is as structurally sound as possible. MIG (Metal Inert Gas) welding techniques are employed ensuring the welds are as thick as the thickest section of alloy's being joined together.

## **Lifetime Warranty**

ECB provide a lifetime warranty and consumer guarantee on all of our manufactured products. This guarantee highlights the confidence in our ability and provides complete peace of mind for your purchase for the lifetime you own your vehicle.

# Product Care

---

## Polished Products

Being a premium mirror polished finish, regular maintenance will be required to keep that iconic ECB shine. We recommend using our own brand of Aluminium Polish. This formula has been tried and tested and in our opinion is the world's best standard.

**Directions:** Apply a small quantity of Aluminium Polish to a clean soft cloth and rub the metal surface. The longer the rubbing the brighter the surface becomes. Wipe off Aluminium Polish with clean soft cloth. Also suitable for motorised buffing machines.

**Note:** There are more specific details on the polish bottle. Please read before use.

## Powdercoated Products

Our powdercoated finishes are very low maintenance. Infact there is actually very little you will ever need to do for this product. Just clean it as you would your car and it will stay looking good as new.

## ECB Aluminium Polish

When you're looking for that showroom finish look for your polished automotive products, you can depend on the no compromise quality of East Coast Bullbars Aluminium Polish. This specifically designed product is the best polish available and we guarantee that this \$#!+ works. With over 40 years of manufacturing polished alloy products we have trialled a large range of different polishes on the market and believe without a doubt that nothing beats the finish quality of East Coast Bullbars Aluminium Polish.

East Coast Bullbars Aluminium Polish is excellent for use by hand and is ideal for polished bullbars, nudge bar and stainless steel products. This polish will clean, polish and protect your product from the elements whilst bringing your products back to that showroom finish look.



# BI60SY

## Stage 1

- Test drive vehicle to ensure all driver assists are correctly working and to gauge effectiveness. Park on a flat level surface.
- Apply parking brake and lift bonnet.
- Unwrap ECB Protection bar and disconnect mounts. Discard bolts.
- Ensure these instructions are left with the vehicle owner and/or operator.



## Stage 2

- Release the fasteners and remove the inner wheel arch splash guards from each side of the vehicle.
- Retain all fasteners for re-fitting.



## Stage 3

- Release the caps on the bumper bar covering bumper fasteners.
- Release the three (3) nuts each side fastening the bumper bar to the chassis.
- Remove the fog light inserts from the bumper and discard.



# IVECO DAILY C50- 01/15on

## Stage 4

- Release three (3) nuts under the wheel arch each side fastening the bumper bar reinforcing panel to the chassis bracket.
- Retain all fasteners



## Stage 5

- Disconnect the indicators and fog lights and remove the bumper bar.
- Remove the indicators and fog lights from the bumper bar and discard.



## Stage 6

- Remove the bumper bar mount from the chassis rail, discard the fasteners.



# BI60SY

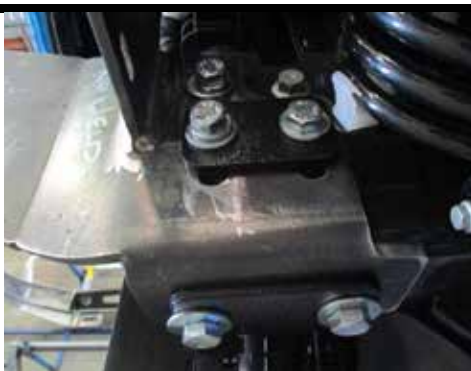
## Stage 7

- Position the driver's side steel mounting bracket (supplied) using three (3) M12 x 75 x 1.75mm bolts, flat washers, spring washers and small bolt washer plate (supplied) through the side.
- Fasten under the steel mounting bracket using two (2) M12 x 1.75 x 40mm bolts, flat washers, spring washers, large bolt washer plate and nuts (supplied). FINGER TIGHTEN ONLY



## Stage 8

- Position the passenger side steel mounting bracket (supplied) using one (1) M12 x 50 x 1.75mm bolt, flat washer, spring washer and nut through the rear hole.
- In front holes use (2) two M12 x 50 x 1.75 bolt, flat washers, spring washer and bolt washer plate (supplied).
- Fasten under the steel mounting bracket using two (2) M12 x 1.5 x 40 bolts, flat washers, spring washers, large bolt washer plate and nuts (supplied) FINGER TIGHTEN ONLY.



## Stage 9

- Align steel mounting brackets so that the alloy mounting brackets on the protection bar will fit to the outside of the steel mounting brackets.
- TIGHTEN ALL BOLTS





# IVECO DAILY C50- 01/15on

## Stage 10

- Place the bumper bar mount into position each side and mark a line along the inside edge onto the rear of the bumper, offset 15mm and mark a second line to form the initial slot width.
- Once the bumper bar is marked for cutting discard the inner angle section of the chassis mount.



## Stage 11

- Start the slot cut from the bottom of the lower bumper mount holes and extend up to approximately 20mm above the top of the upper bumper mount hole.
- This slot may need to be enlarge later to allow better fitment as the steel mounting brackets need to slide through.



## Stage 12

- Position the bumper bar mounts (removed in step 6) back onto the bumper with original equipment nuts.(FINGER TIGHT ONLY AT THIS STAGE) .



# BI60SY

## Stage 13

- Using the harnesses and cable locks (supplied) attached the Earth wire (white), Indicator Wire (green) and Park wire (black) onto the vehicle wiring harnesses located at the rear of the headlights.
- Connect the fog light adaptor harness (supplied) direct to the vehicles fog light connector.



## Stage 14

- Attach the bumper bar back onto the vehicle resulting in the steel mounting brackets protruding through the bumper bar.
- Align the bumper bar with the bumper bar mounting plate and lightly fasten using washers and M8 nyloc nuts (supplied).
- Align the rear bumper bar mounting (located under the wheel arch) and fasten using the original fasteners.
- Align bumper and tighten all bolts.



## Stage 15

- Place the tow hook into position and TIGHEN BY HAND fully then using a long bar tighten another 1/2 turn to lock into place.
- The tow hook will remain in place after the protection bar is fitted. The tow hook should end up horizontal after tightening.



# IVECO DAILY C50- 01/15on

## Stage 16

- Attach ECB bumper lights to protection bar. Place M6 x 20 bolts, spring washers (supplied) through light mount from inside and attach nut to top. Slide assembly into light mount in Protection bar and centralize light to hole. **TIGHTEN FIRM ONLY.**
- Install bumper light surrounds (supplied) to fog light openings with the large side of surround to inside of opening.



## Stage 17

- Fit ECB LED indicator / park lights into protection bar as per instructions supplied with the LED indicator kit. **NOTE:** Ensure park light is to top.



## Stage 18

- Use resistor as a guide and drill two 3.5mm holes to welded plate on lower rear leg on channel and fix with 6g x 3/4 screws (supplied). Wire one side of resistor into positive of indicator (green) and other side to negative (white).
- Shrink wrap all connections with heat shrink.



# BI60SY

## Stage 19

- Attach 6mm clip lock trim (supplied) to top of ECB protection bar.
- NOTE: Trim off lower edge on an angle so trim will sit flush with end of protection bar.



## Stage 20

- Attach 500mm lengths of clip lock trim (supplied) to air flow cut outs in centre skirt.
- Attach 300mm lengths of clip lock trim (supplied) to tow hook cut outs in the centre skirt (both sides).



## Stage 21

- Attach protection bar to the steel mounting brackets using M12 x 1.75 x 40mm bolts, flat washers, spring washers and nuts (supplied). FINGER TIGHTEN ONLY.
- Align protection bar with vehicle and tighten all bolts.



# IVECO DAILY C50- 01/15on

## Stage 22

- Check that the upper air vents in the protection bar are fitted to direct the air flow downward.



## Stage 23

- Check for correct operation of lights and refit the inner wheel arch splash guards using original equipment.
- Ensure number plate does not cover the air vents when installing.
- Please ensure customer is informed that when they use the tow hook the strap must go through and attach to both the tow hook and the skirt section of the bar.



# Final Checks & Installation Kit

## Ensure Number Plate is Clearly Visible

Note: When fitting/refitting the licence plate to the vehicle, ensure there is no obstruction to licence plate vision in accordance with local authorities. If required relocate licence plate to an alternate location.

## Further VFPS Notes

1. Do not attach VFPS to the vehicle using anchorages not intended for this purpose (e.g. engine mounting bolts).
2. Do not use this product for any vehicle make or model, other than those specified by the VFPS manufacturer.
3. Do not remove the plaque or label from the VFPS.
4. Do not modify the structure of the VFPS in any way.
5. No accessory or fitment should project forward of the VFPS forward profile.
6. **Ensure these instructions are left with the vehicle owner and/or operator.**

## Important Information

Periodically check bolts and nuts for correct tightness, especially if traveling on rough roads.

## Installation Kit

1 - Pair Steel mounting brackets	2 - M6 nuts
2 - Large washer plates (100 x 50 x 6mm)	4 - 6g x 3/4 screws
2 - Small washer plates (80 x 50 x 6mm)	1 - 2200mm length 6mm clip lock.
3 - M12 x 1.75 x 75mm bolts.	2 - 500mm lengths 6mm clip lock
10 - M12 x 1.75 x 40mm bolts.	2 - 300mm lengths 6mm clip lock
3 - M12 x 1.75 x 50mm bolts.	1 - ECB Indicator / DRL / Park light kit
28 - M12 flat washers.	2 - 50 watt resistors (ICLED R12/2)
16 - M12 spring washers.	12 - Cable locks
11 - M12 nuts.	1 - Pair ECB Bumper Lights
6 - 5/16 x 1 x 16 flat washers	1 - Quick Click Bumper light harness (IC10D40S1004ECBH)
6 - M8 nyloc nuts	
2 - M6 x 20mm bolts	2 - Bumper light trims
2 - M6 spring washers	

# Finished Product

---



This Page has intentionally been left blank.



# Warranty Registration

---

## Contact Details

Name: \_\_\_\_\_

Address: \_\_\_\_\_

Product: **BI60SY** \_\_\_\_\_

Email: \_\_\_\_\_

Phone: \_\_\_\_\_

Work Order Number: \_\_\_\_\_

You can find this on the silver label  
of your ECB product.

By submitting this registration you automatically subscribe to ECB's mail outs.  
You can unsubscribe at any time.

## Register Online

For online registration please go online to [www.ecb.com.au/warranty-registration](http://www.ecb.com.au/warranty-registration)  
If you have any questions please contact our national office on 1800 069 145 or  
[www.ecb.com.au](http://www.ecb.com.au).



**PN: BI60SY**

**Please post to: PO Box 122,  
Margate QLD 4019**

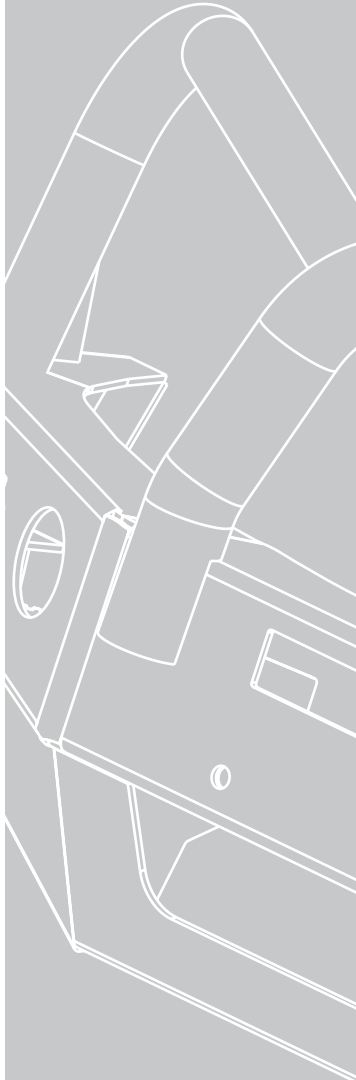
\_\_\_\_\_

This image shows a blank sheet of white paper with horizontal ruling lines. The lines are evenly spaced and extend across the width of the page. There are no margins, text, or other markings on the paper.

---

---

REPLACES: N/A  
REVISED: 14.07.20



1800 069 145  
[www.ecb.com.au](http://www.ecb.com.au)

# **Strongest Built Australian Made Lifetime Warranty**

29 Snook St, Clontarf QLD 4019  
PO Box 122, Margate QLD 4019